

PANEL PLASTIC

PRODUCT DATA SHEET



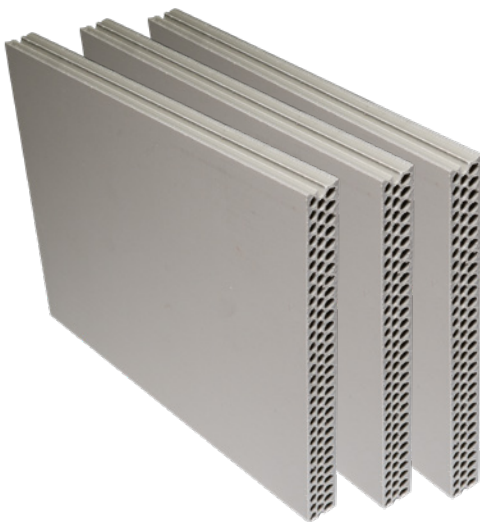
PRODUCT DESCRIPTION:

Shuttering Panel Plastic is made of high quality polypropylene. It is adjusted to international construction standards. This product is characterized by high rigidity, heat resistant, corrosion resistant and has much higher impact strength. The allowable working temperature is in the range of -20~90 °C.



height [mm]	2500	2000
width [mm]	1250	500
thickness [mm]	21	21

INDEKS	NAZWA	WAGA (kg)
7500000888	PANEL PLASTIC 2500X1250X21mm	35,4
7500000889	PANEL PLASTIC 2000X500X21mm	11,2



**1. REUSABLE (MORE THAN 30 TIMES)**

Shuttering is tested to achieve a minimum of 30 cycles of repeated use in pouring concrete.

**2. 100% WATER RESISTANCE**

Plastic panels are weather resistant, such as rain is no longer a problem for their quality.

**3. DOES NOT REQUIRE NON-STICK OIL**

The surface is mixed with additives that make the board highly resistant to acidic or alkaline environment. No de-forming oil is required, and disassembly of the formwork is always easy.

**4. VERY GOOD PROCESSABILITY**

Easy to use for the user. Works well with saw, nails, drill, various cutting, etc. Compatible with other materials such as wood, steel, aluminum, etc.

**5. LOW WEIGHT**

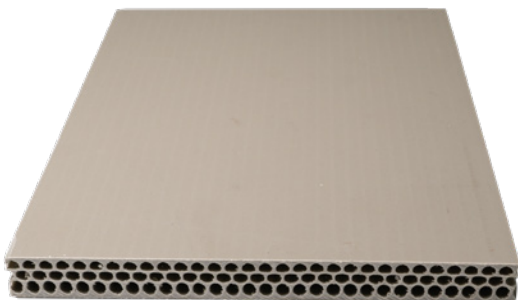
The panels are 20% lighter than conventional plywood, and thus easier to handle and assemble, which translates into lighter and faster work.

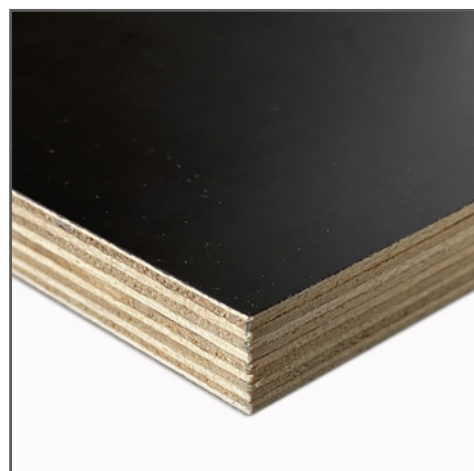
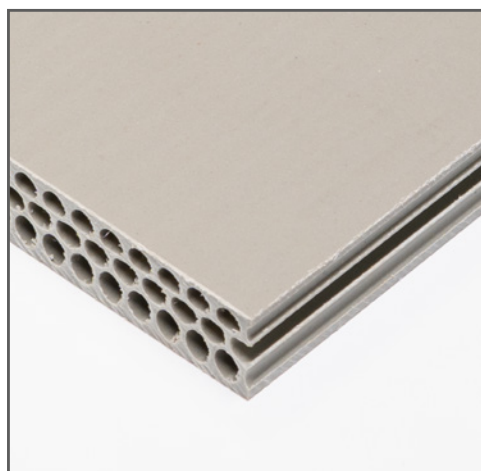
**6. EASY TO REPAIR**

Easy regeneration of damaged surface with adhesive, repair can be done on site.

**7. COST SAVINGS**

Using one set of plastic panels can save up to 60% of your total budget (compared to using standard plywood or metal formwork).





Fabric	Plastic	Birch plywood
Wear resistance	High	Weak
Damage resistance	High	Weak
After absorbing the water	No deformation	Deformation
non-stick oil	Not required	Required
Warping after use	None	Yes
Weight [kg]	35,4	47,7
Recycling	Yes	No
Load capacity	High	Normal
Environmentally friendly	Yes	No
Cost of use	Low	High
Number of ratios	>30	10-20

